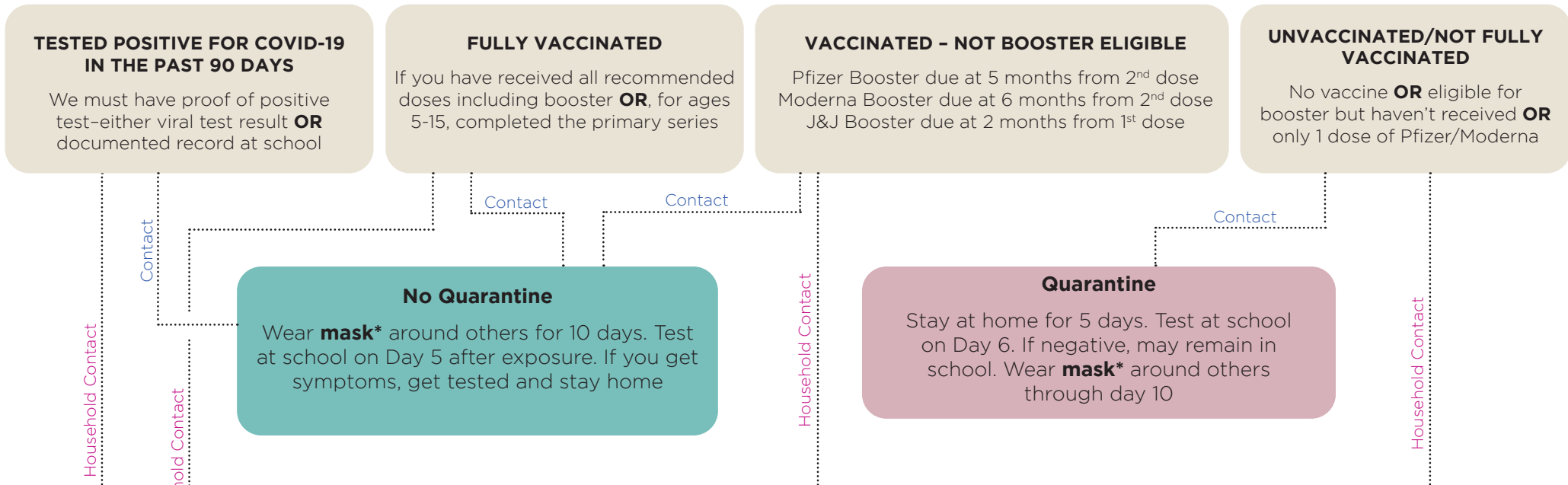
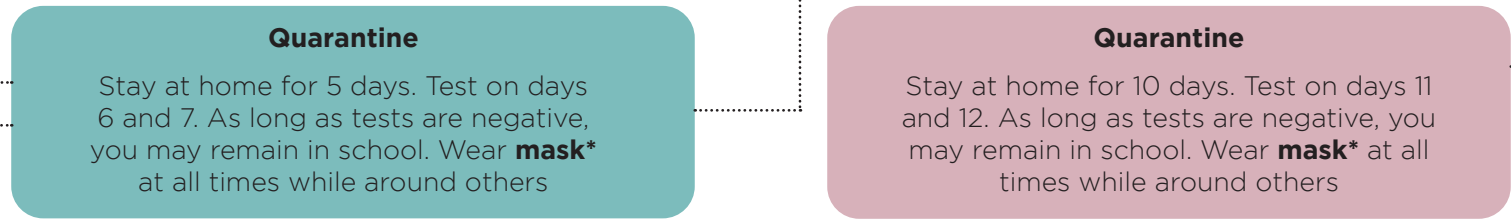


## CONTACT



## HOUSEHOLD CONTACT



## POSITIVE CASE

**Isolate**

Regardless of vaccination status, stay home for 7 days. Return on day 8 if symptoms have resolved. Wear **mask\*** through day 10 and at all times

**\*Proper well-fitted mask wearing is required through day 10. This includes all extra-curricular activities**

